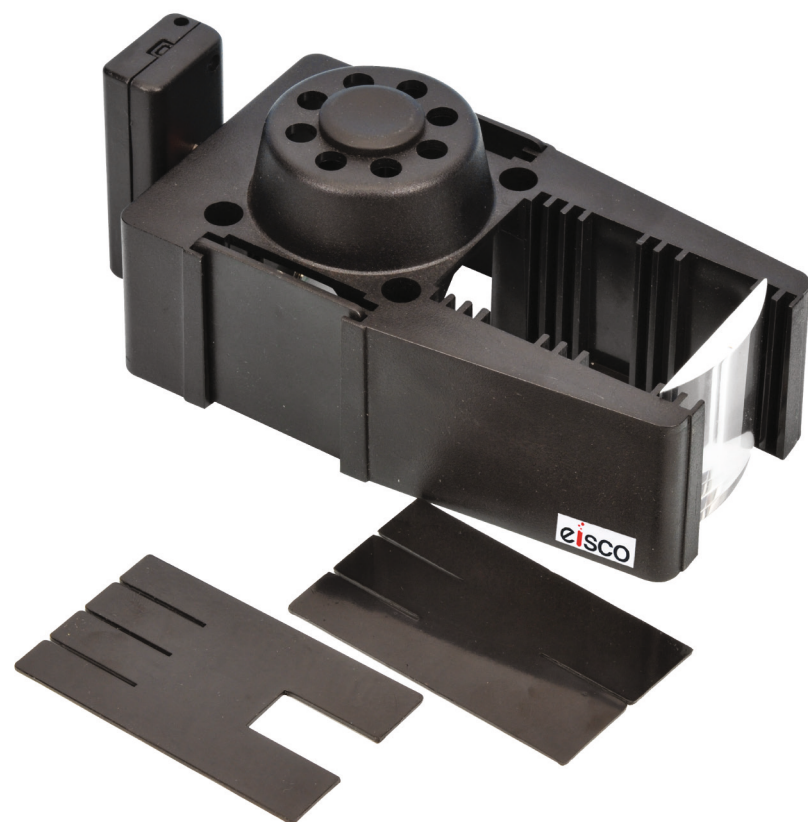




## RAY BOX

CAT NO. PH0602A-LED



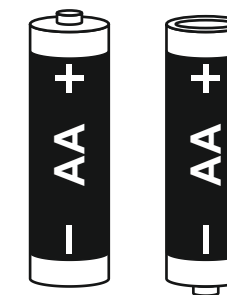
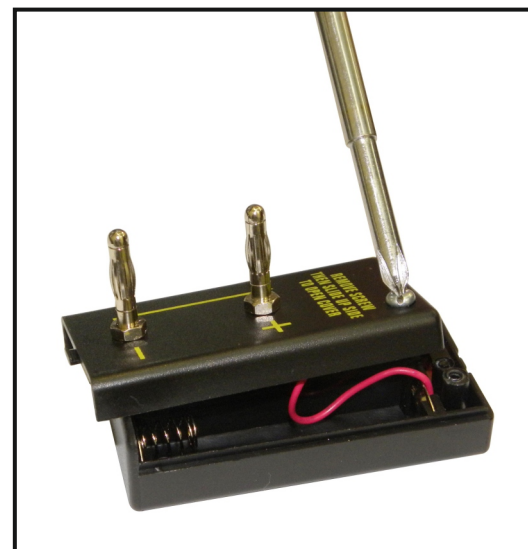
## Experiment Guide

### INTRODUCTION

Ray box is designed to be used in a wide range of optics experiments. It comprises two side openings with two slots to accommodate blanking plates, front opening with seven grooves for accessories and lenses. Supplied with a 3V LED, blanking plates, slit plate, Battery Holder

### INSTRUCTION FOR USE

A Battery Holder (Two AA Cell Holder) is supplied to run the Ray Box. The LED Ray box requires Two AA batteries (not included). Loosen the screw from the battery compartment cover using a screwdriver. Insert the batteries, close the cover, and then secure by tightening the screw.



**Note :** Do not mix old and new batteries. Do not mix alkaline, standard (carbon-zinc), or rechargeable (nickel-cadmium) batteries.

### Operation :

Turn ON the Cell Holder after Inserting the batteries. The Ray Box should immediately operate. Slits as they are known are placed in the beam creating either a single beam or multiple beams of light. Prisms, lenses, glass/plastic blocks or mirrors are often used in conjunction to produce spectrums and to demonstrate refraction, reflection and dispersion of light. To see these beams accurately, screens are sometimes used.

-1-

Manufactured by :



U.S. Distributor :

**Eisco Scientific**

850 St Paul St, Suite 15, Rochester, NY 14605

Website : [www.eiscolabs.com](http://www.eiscolabs.com)