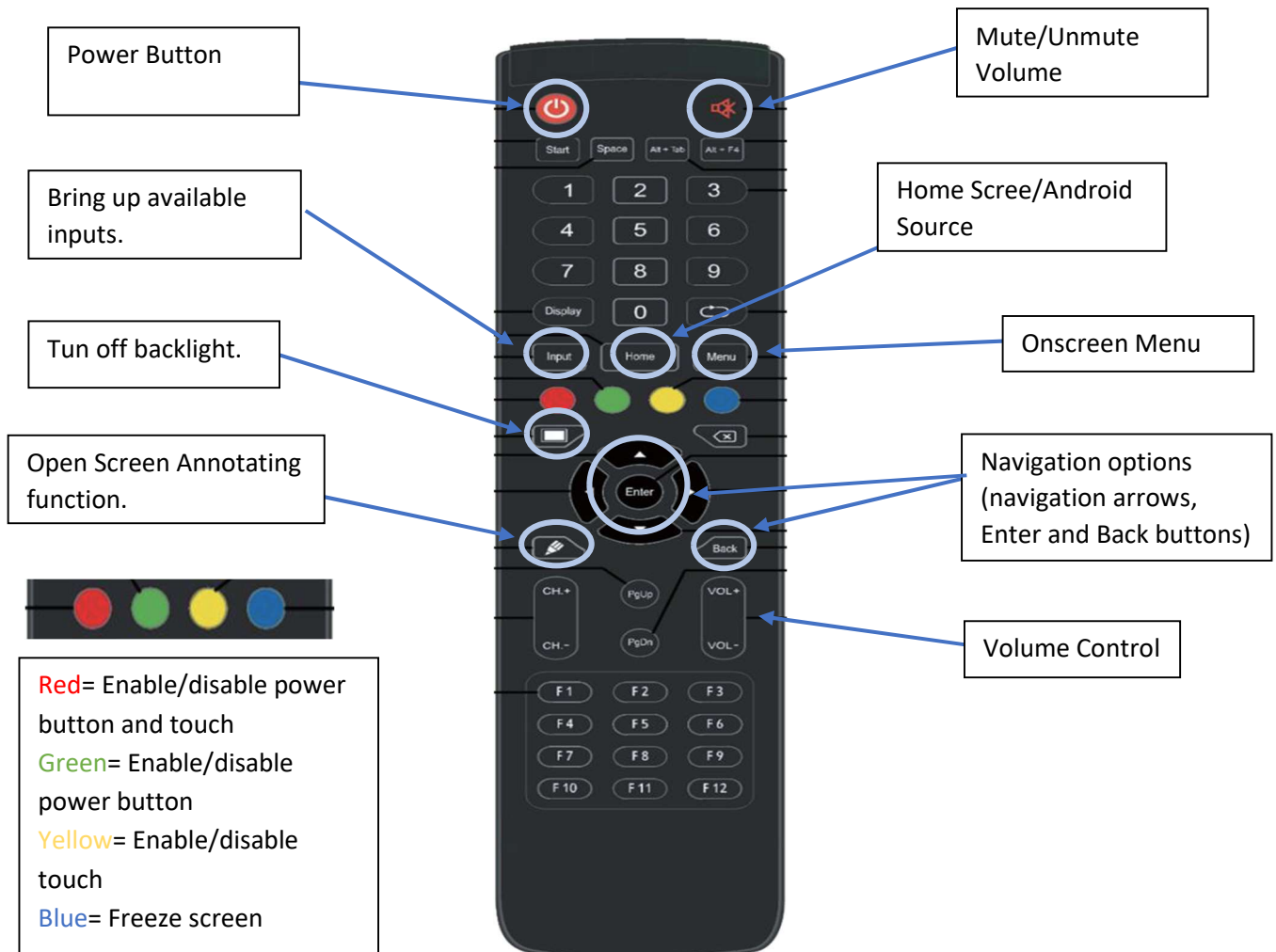
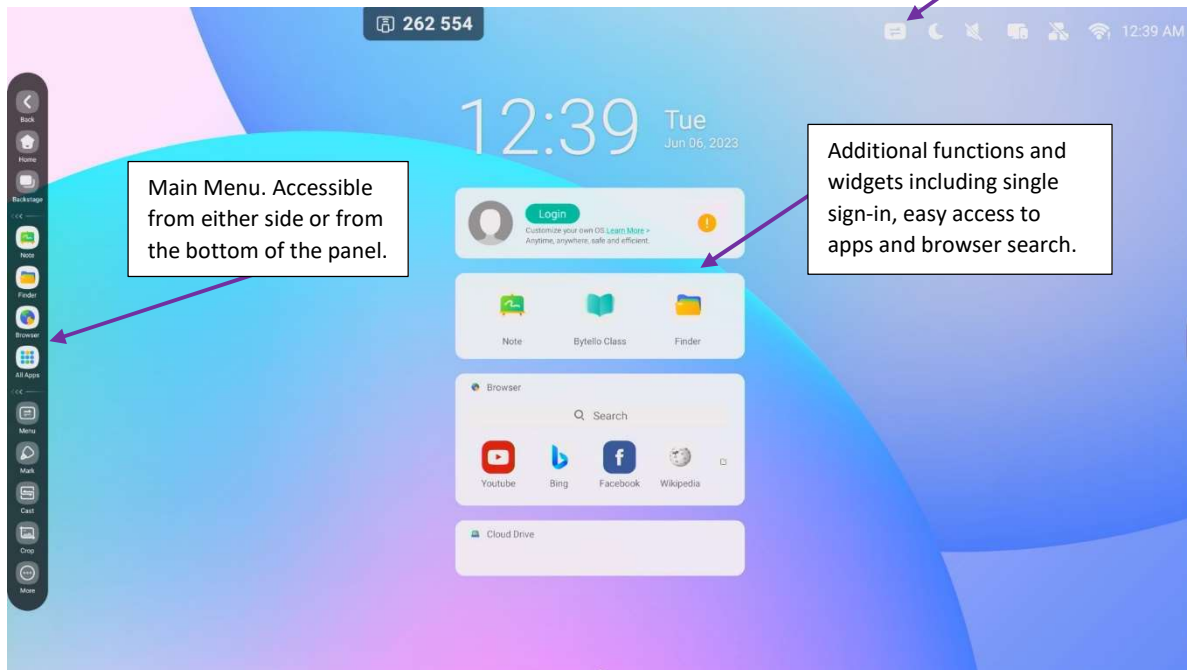
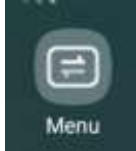


Home Screen



Press on Menu to access additional settings including source changing, display control and audio control.



Browser: Web browser for searching information and content.

Bytello Account: Single Sign in function for personalised experience.

Bytello DMS: Device management.

Cloud Drive: Add either a One Drive or Google Drive to the MTA Panel.

Finder: Access files and folders that are on the panel's memory, external USB drive or the cloud drive.

Keeper: Optimizes panel performance by deleting temporary and unwanted files.

Note: Whiteboard/Note taking app.

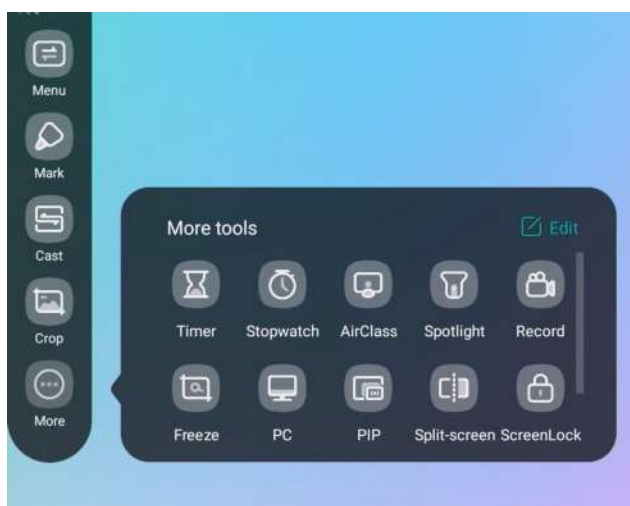
Palette: Mess free art app.

PIP (Picture in Picture): Allows the Android system to be shown with an external source. Multi window mode needs to be enabled in Settings.

Settings: Access the panel settings.

Visualiser: Use an external USB camera to take pictures and video.

WPS Office: Open office documents such as Word, PowerPoint, Excel and PDF.



Menu: Change sources and access basic settings.

Mark: Annotate and highlight on top of content.

Cast: Open Bytello Share to screen share devices to the panel.

Crop: Take a snapshot of the screen to save or to insert into the Note app.

Timer: Open a countdown timer.

Stopwatch: Open a stopwatch.

AirClass: Collaborative app using student devices.

Spotlight: Creates focus on one section of the screen

Record: Record the screen. You will need to add a microphone to record sound.

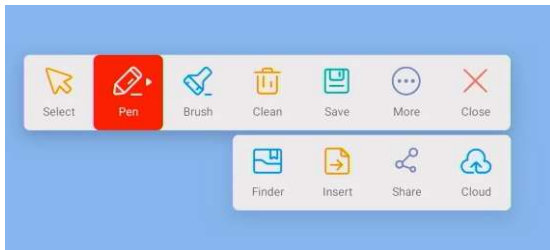
Freeze: Creates a still image of what is currently displayed.

PIP (Picture in Picture): Show and interact with an external source over the Android system.

Split Screen: Easily show 2 apps on the screen at the same time.

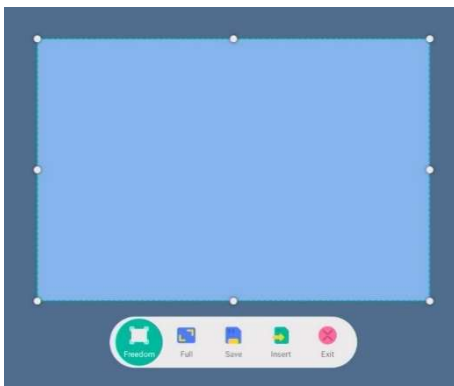
Screen Lock: Lock your panel for when not in use.

Mark Function



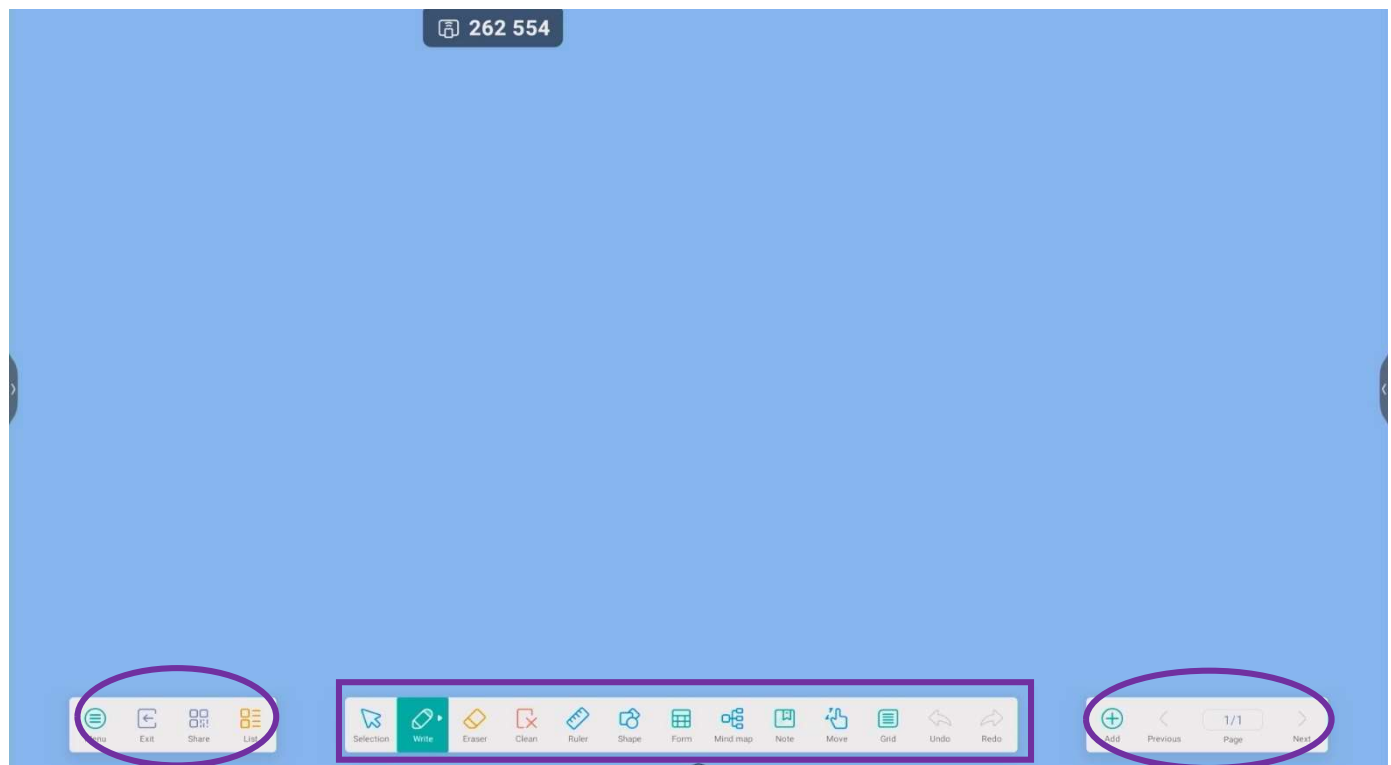
Select: Hides annotations and allows interaction with panel.
Pen: Draw over content. Tap twice to select a different colour.
Brush: Highlight content. Tap twice to change colour.
Clean: Discard all annotations.
Save: Quick Save to Mark section in Finder.
Finder: Open file location where saved annotations are.
Insert: Imports annotations into Note App.
Share: Generate a QR code to share to mobile devices.
Cloud: Upload copy of annotations to a connected cloud drive.
Close: Close the Mark function

Crop Function



Freedom: Create your own capture area
Full: Capture the whole screen
Save: Quick save captures to Mark section in Finder
Insert: Import a capture into the Note App

Note App



Additional options including opening and saving whiteboards, Importing content and changing the background.

Access the main tools available. This can be changed in the Settings.

Add pages and navigate through existing pages.

Drawing options



The MTA Panel pen has 2 sides, a thin and a thick end. You can customise each end so that 2 children can write in different colours.

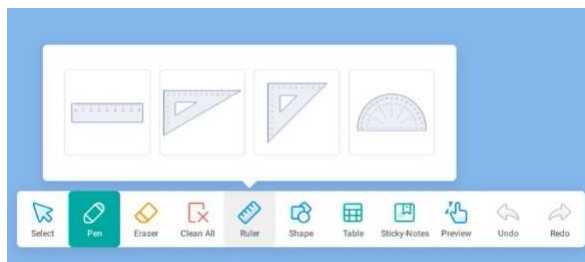
The Magic Wand is a Smart tool that turns annotations into images.



Circling around annotations with the Select tool allows for additional editing options.

These editing options change depending on the content you select.

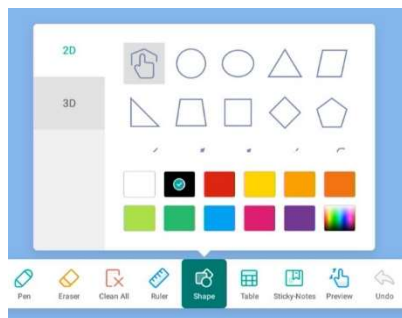
Math Tools



The math tools included are a ruler, two set squares and a protractor

Use the ruler and set squares to draw straight lines.

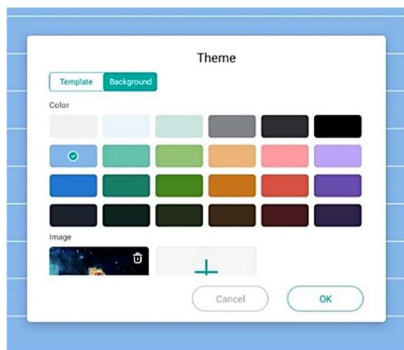
Use the protractor to mark out angles.



There is the option to draw 2D and 3D shapes. When a shape is selected additional editing options will be provided.

The finger with a hexagon is a Smart Shape tool that assists with drawing shapes free hand

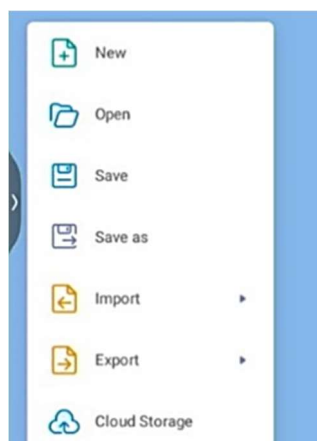
Background options (Theme)



Templates: inserts a template as part of the backgrounds, such as handwriting lines and grids.

Background: Change the colour of the background or insert a custom background.

Saving and Exporting



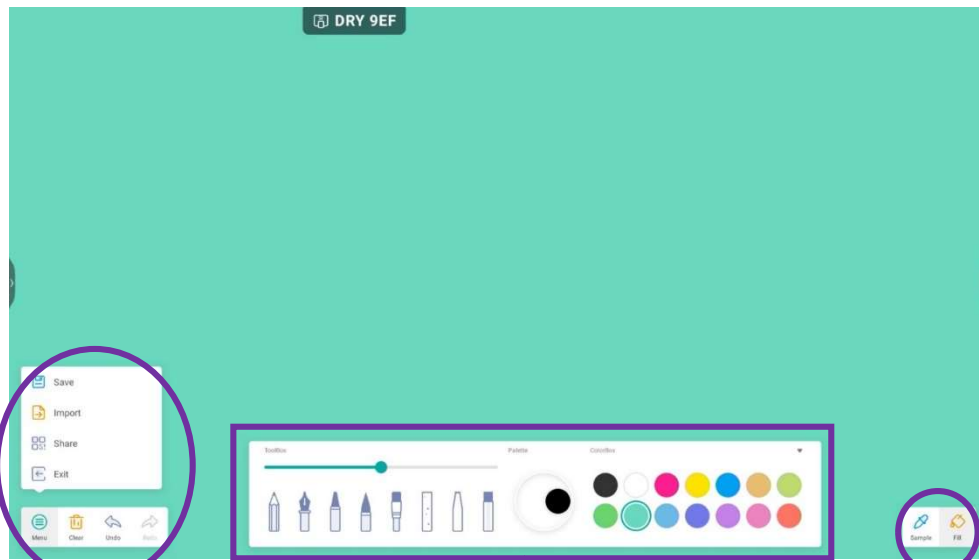
Save and **Save as:** Creates an editable file that can be opened later to add changes.

Export as a PDF: Each page of the file becomes one A4 page

Export as an Image: Each page of the file becomes a separate image.

Note: make sure all content is visible on each page before exporting. Use the Preview function to do this.

Palette



Save: Save the art as an image file.

Import: Insert an image as a background (Full HD image recommended).

Share: Generate a QR code to share content.

Exit: Exit the app.

Clear: Clear the canvas.

Toolbox: Select the type of drawing tool and thickness.

Palette: Mix colours together.

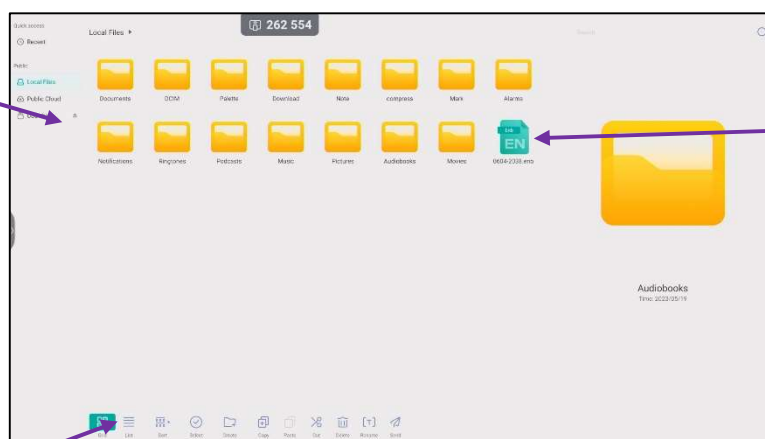
ColorBox: Select your colours.

Sample: Take a pain sample from to artwork to be used as a colour.

Fill: Add a background colour or fill an enclosed space with colour.

Finder

All accessible storage devices and cloud drives.

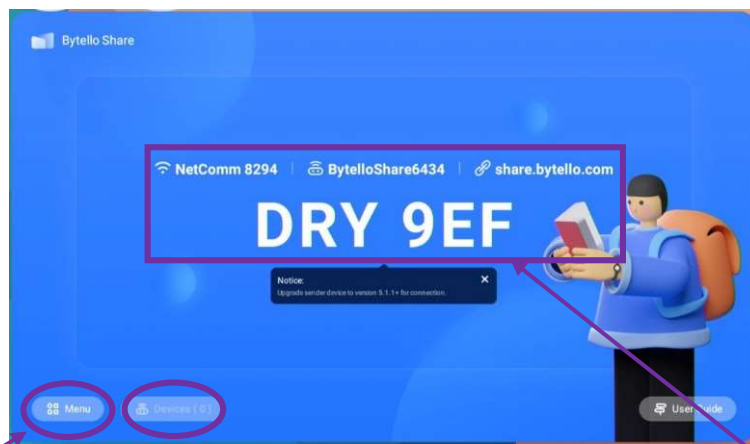


Tap once on a file or folder to access additional options. Tap twice to open.

Options for:

- How files and folders are viewed.
- Selecting content.
- Options for organising such as creating a new folder and moving content.

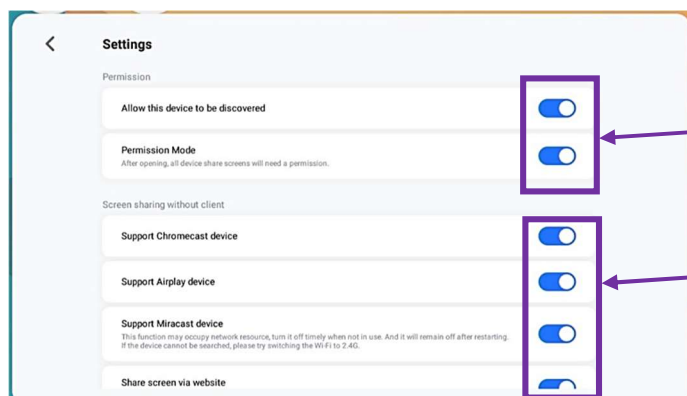
Casting (Bytello Share)



Access to Product Activation, Screen Copy Function and Settings.

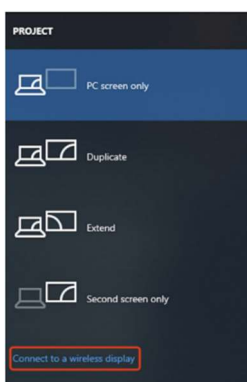
Waiting room for all connected devices.

MTA Panel connection information.

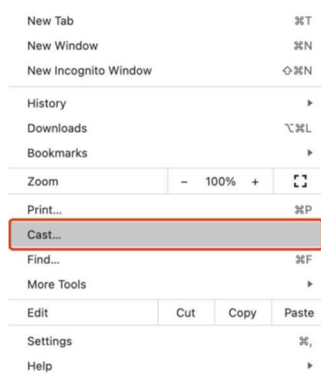


Both will need to be enabled for secure screen sharing to occur.

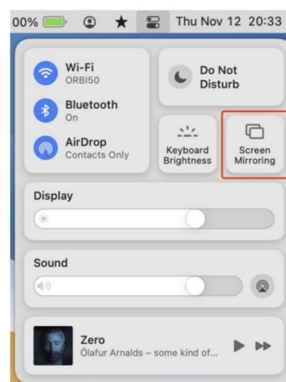
Chromecast= Chrome books and Chrome browser.
Airplay= Mac and iOS devices.
Miracast= Windows PCs and Android devices.



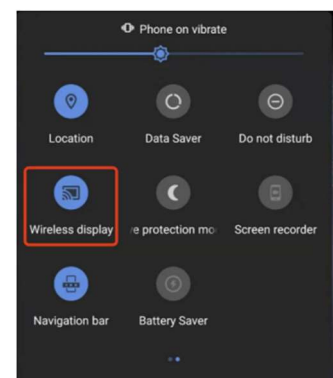
Windows PC
"Win + P" them select
Connect to a wireless
display.



Chromebooks
In the Chrome
browser, select the
"Cast" function.



Mac and iOS
Select the Screen
Mirroring option.

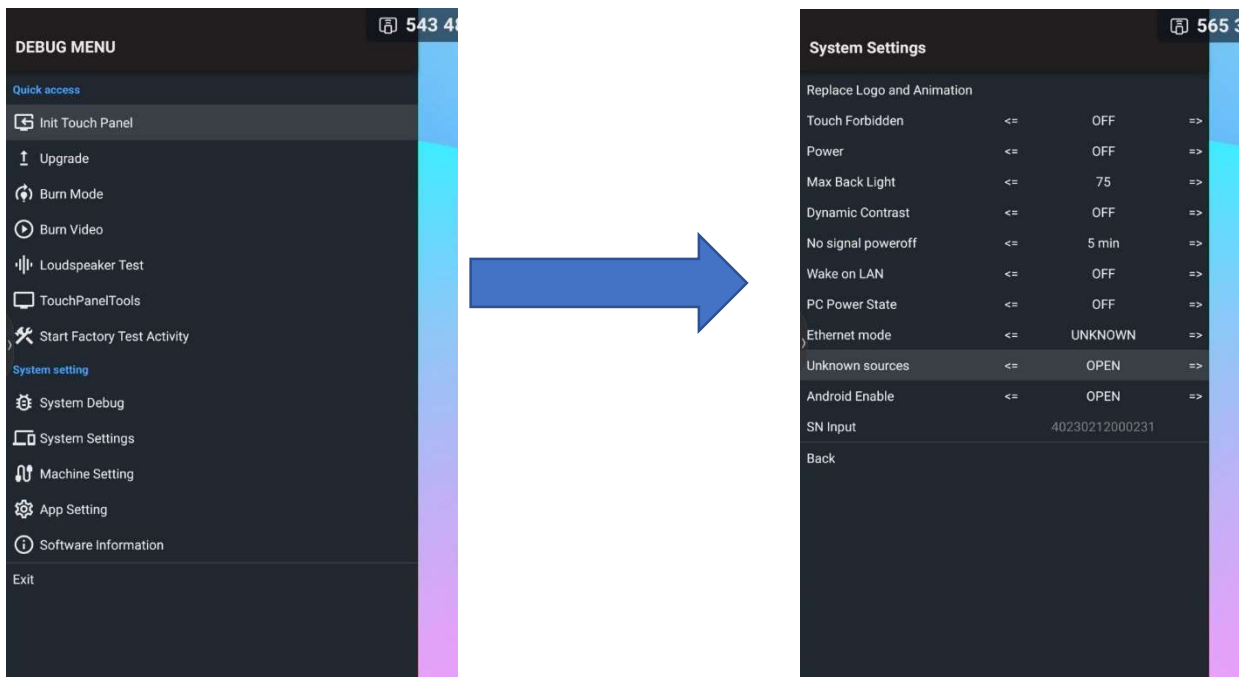


Android devices
Use the built-in
screen sharing
function.

Adding Third Party Apps

To add Third party apps, You need to make sure that the function has been unlocked on your device.

1. On the remote control. Press INPUT 1 3 7 9 to access the Debug Menu.
2. Select System Settings and then press on Unknown Sources so that it says OPEN.



3. Once this is completed, visit Aptode on the panel's web browser and download the App Store. Once this has been installed, you will be able to search and install apps onto the MTA Panel.

<https://en.aptoide.com/>