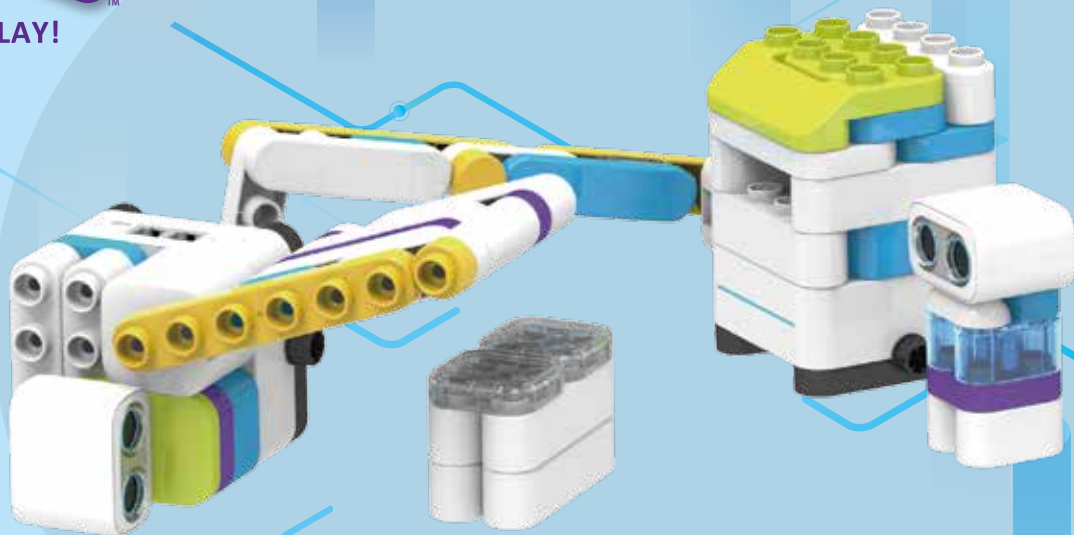


# BOTZEEES™

CREATE, PROGRAM & PLAY!

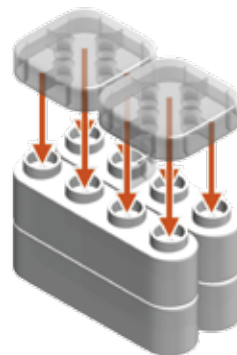
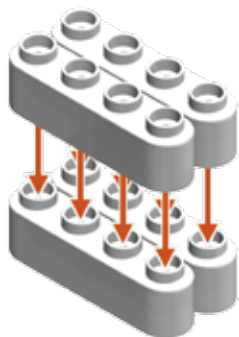


## Our City

Folding Bridge



**The ship is coming, open the folding bridge to let it get through!  
Let's build a folding bridge!**

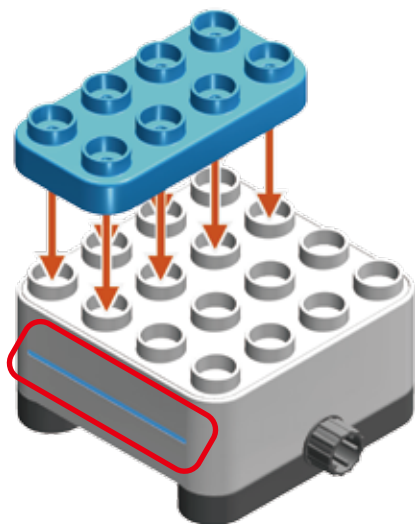




X1



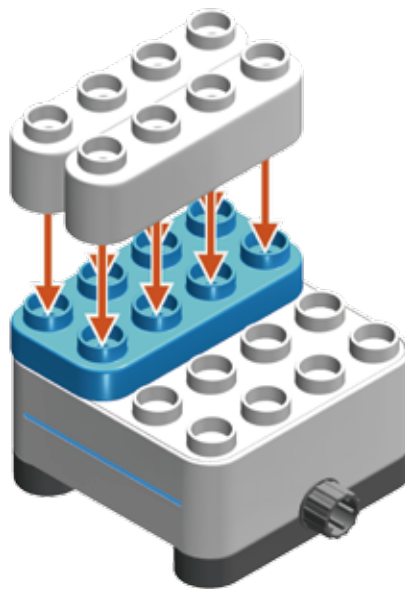
X1



Please note the direction of the programmable light!

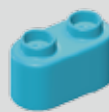
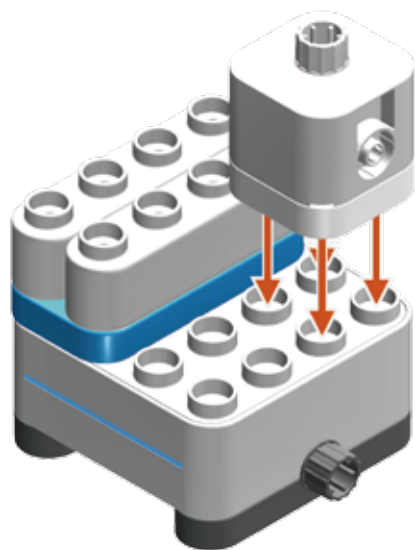


X2

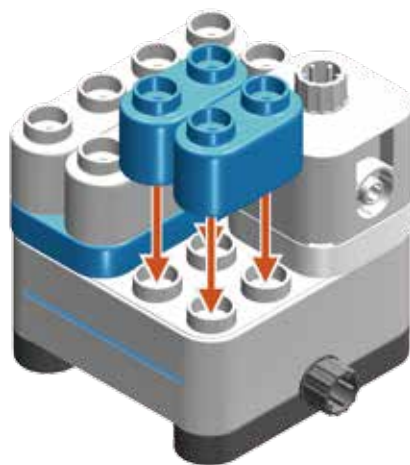


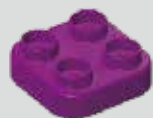


X1

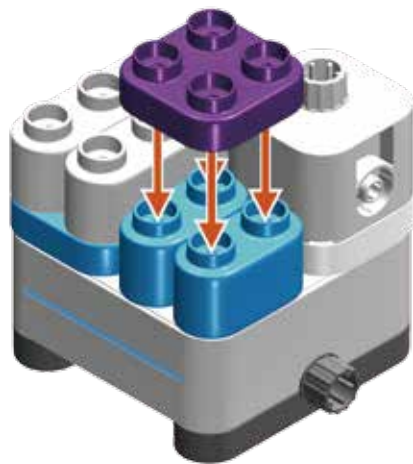


X2

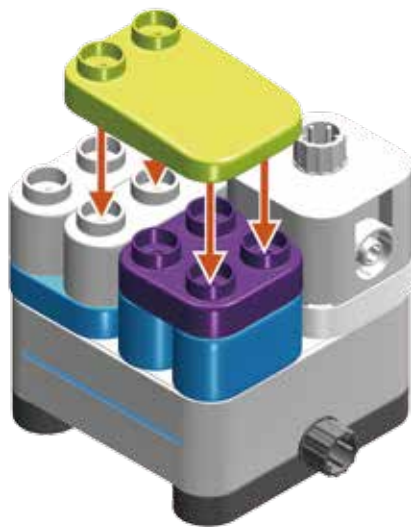


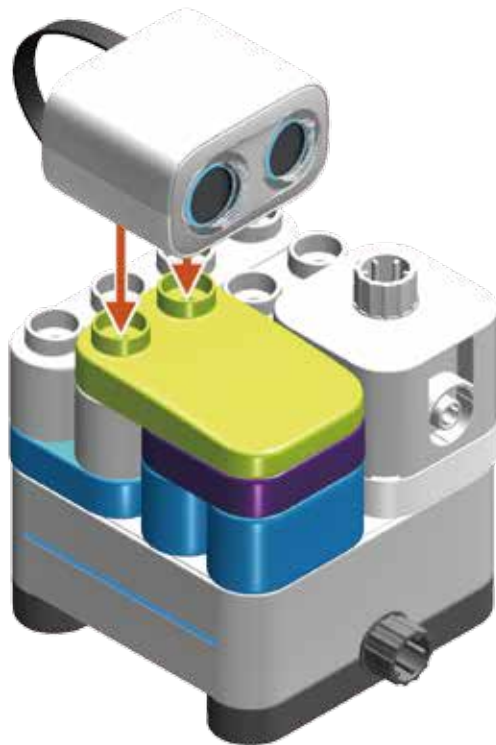


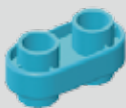
X1



X1







x1



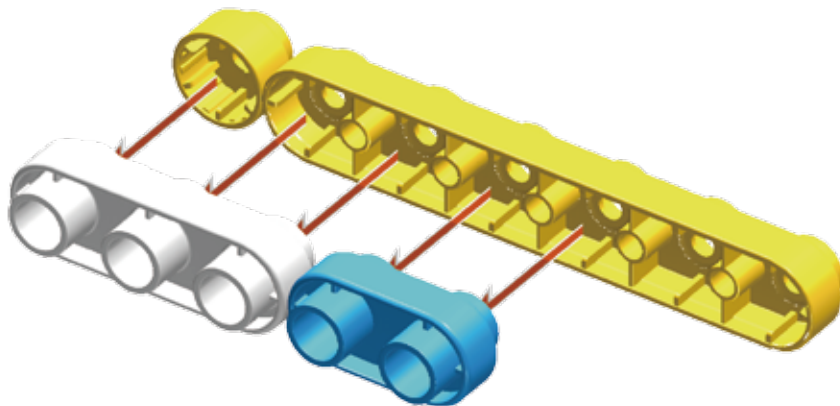
x1

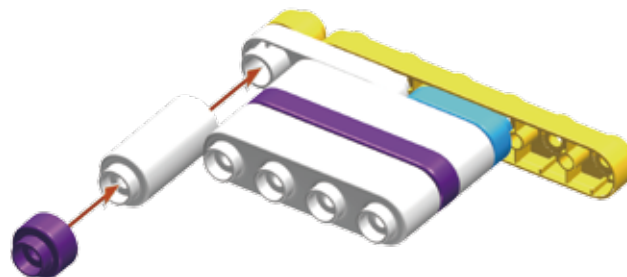
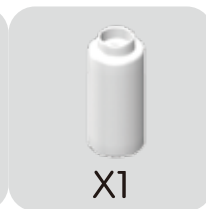
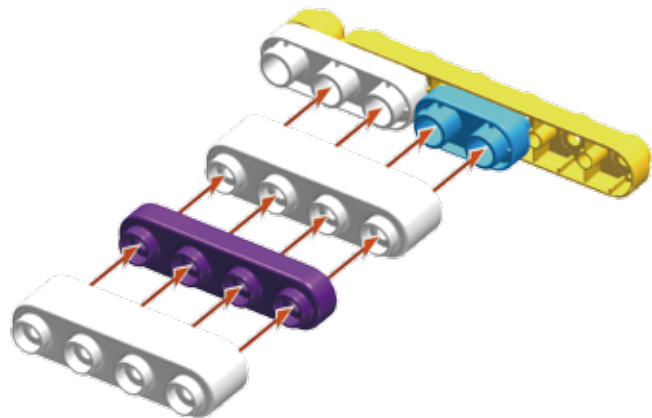
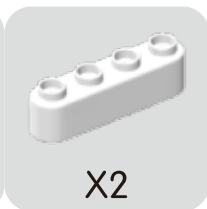
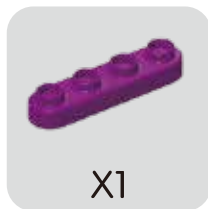


x1



x1



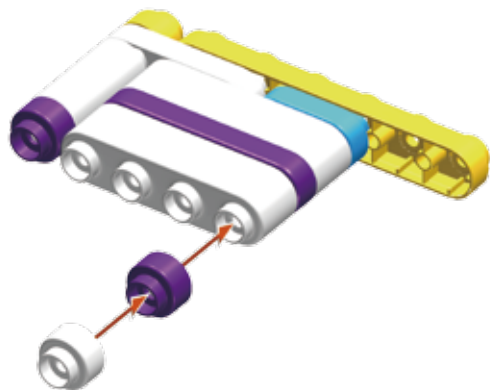




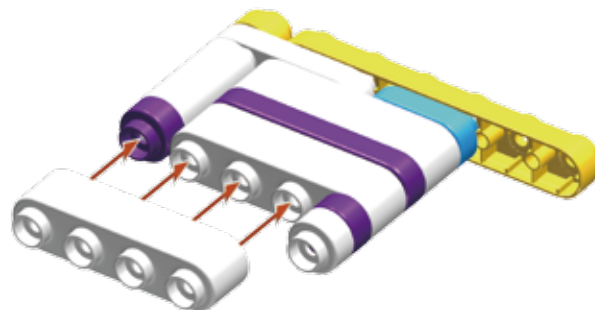
X1

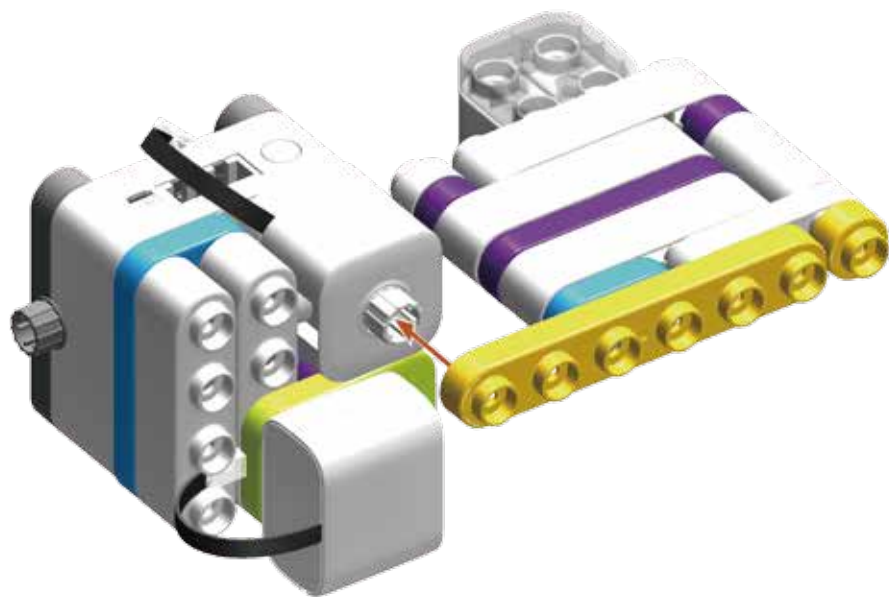


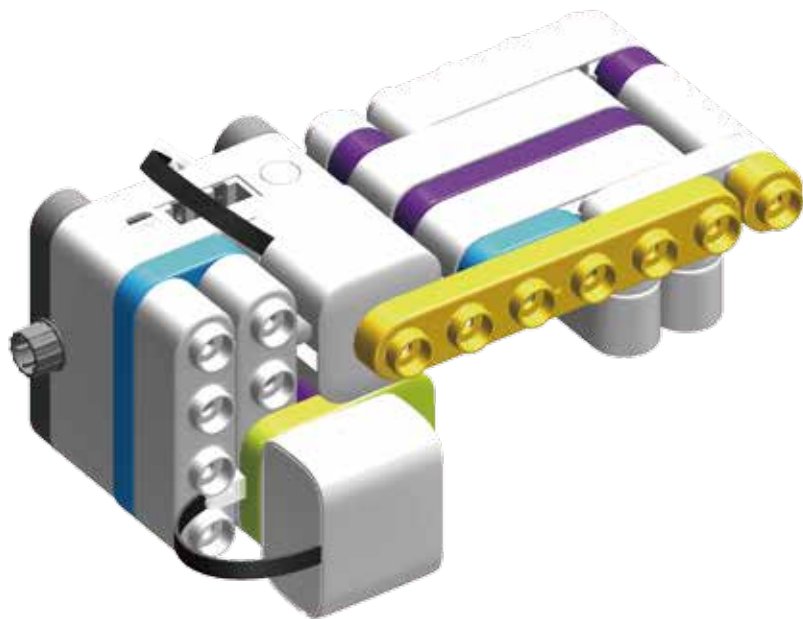
X1



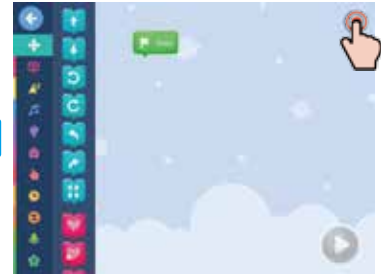
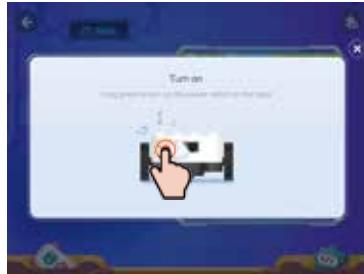
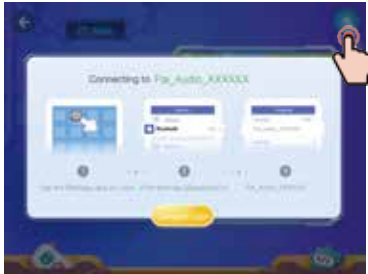
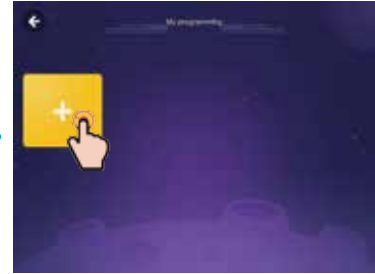
X1







# Prepare your device



# What to learn

1. Learn to use loop command  .

2. Learn to use motor command  , delay

command  , distance sensor command 

and loop command  to program.

# Let's get it started!

1. Open the folding bridge.



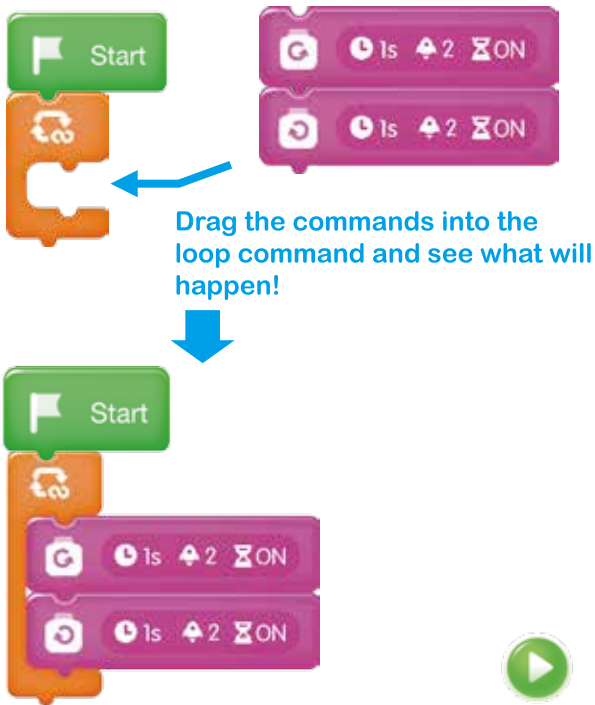
2. Close the folding bridge.



3. Open the bridge, and close it after 5 seconds.



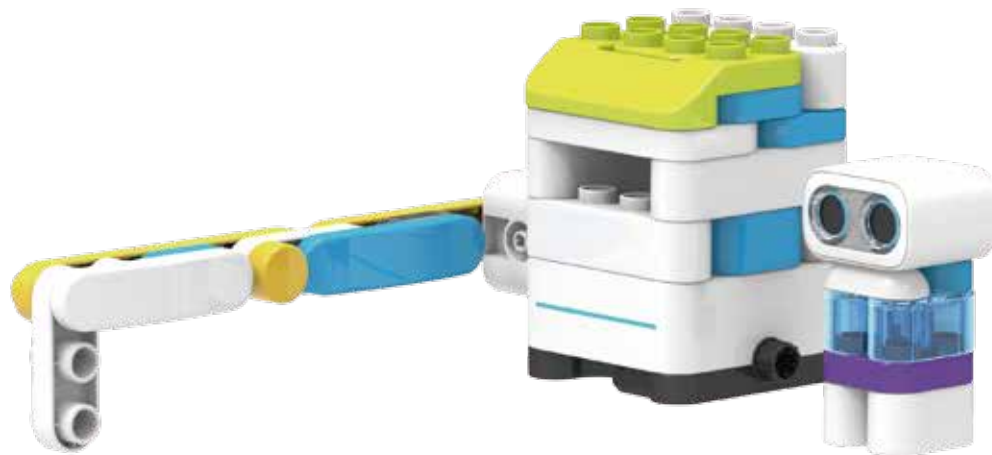
# Try these commands!



Have a try

## 1. Building task

Let's build a parking lot gate!



Have a try

## 2. Programming task

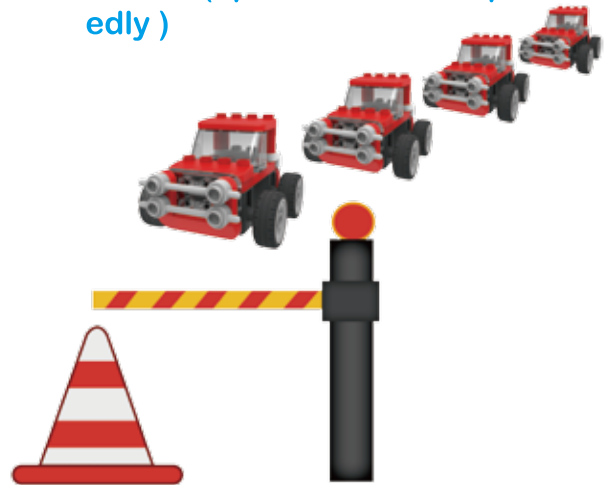
### Task 1

The gate opens automatically when a car comes and then closes. (open and close for once)



### Task 2

The gate opens automatically when a car comes and then closes. (open and close repeatedly)



## For reference

### Task 1



### Task 2



The program will stop if it is not triggered within 10 seconds, showing no triggering effect.



[www.pai.technology](http://www.pai.technology)